

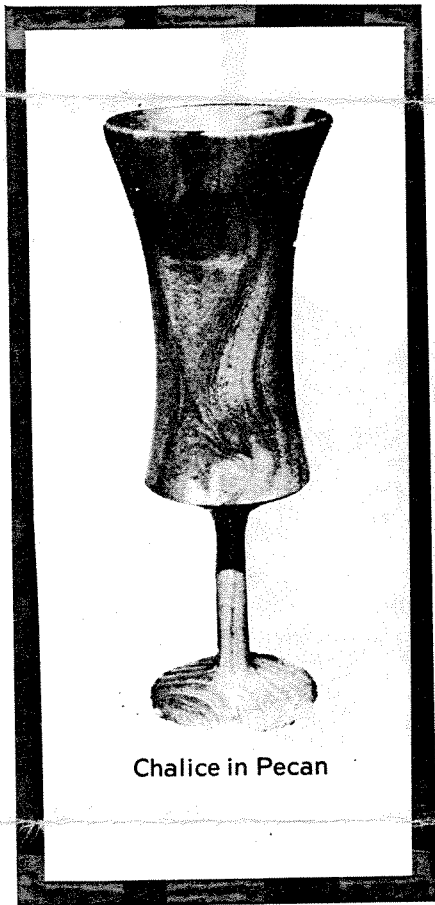


*Journal Of*  
*The North Carolina Woodturners' Association*

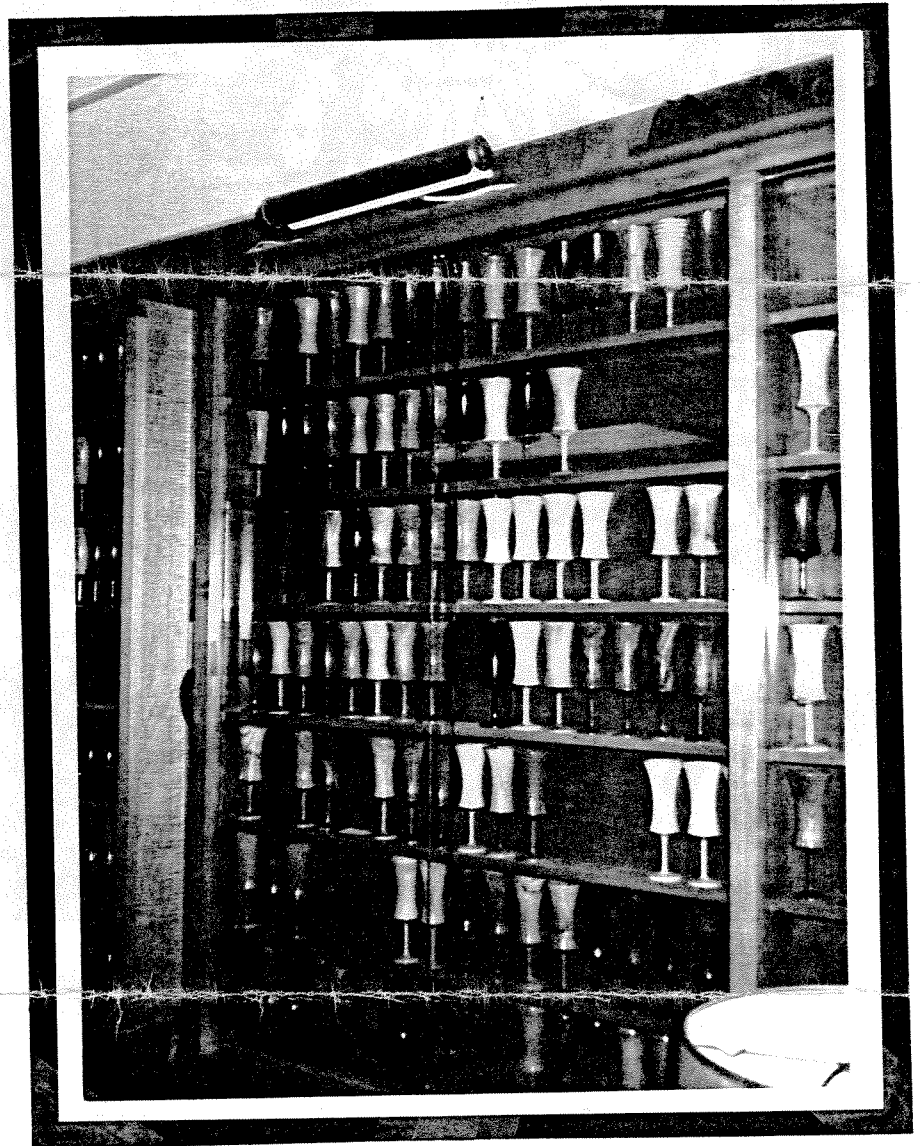
VOL. 2 NO. 5

May, 1992

Editor: Ken Bachand, Rt. 1, Box 192-C, Brevard, NC 28712



Chalice in Pecan

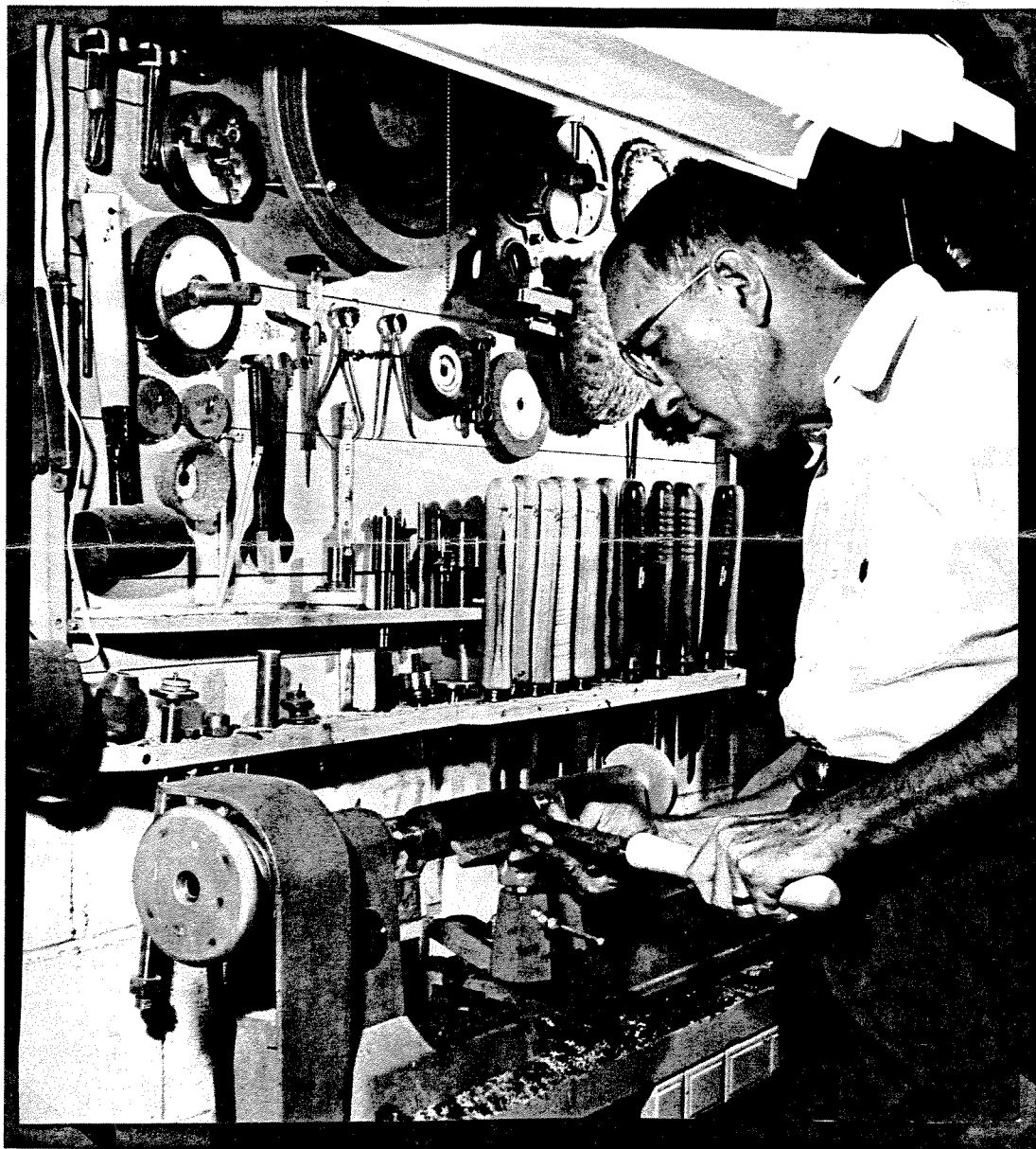


A PASSION FOR WOOD

By Dr. Carlton M. Herman

Max Kline had a passion for wood and was a master woodcrafter. He died in 1989. Had he lived, I am sure that he would have been an active member of the North Carolina Woodturners.

Max got a degree in chemistry from Pennsylvania State University and a master's degree from Lehigh University. He moved to Saluda, North Carolina in 1976 from Schenectady, New York, when he retired as a research chemist from Norton Abrasives.



Max Kline

at work

on his

Delta lathe

His main hobby was woodworking. In his early woodworking years, he received the prestigious Delta Craftsman Award. Max was an active member of the International Wood Collectors Society (IWCS), served on the governing board, and for several years was chairman of the publications committee. For a number of years, he wrote a monthly column entitled "Wood of the Month", which was published in the monthly Bulletin of the IWCS and its succeeding journal WORLD OF WOOD.

Max and his wife, Dorothy, traveled extensively throughout the United States, most of Canada, and much of Mexico with their trailer. Everywhere he went, Max collected wood and also visited many fellow members of IWCS with whom he swapped pieces to add to his collection. Each new species he obtained was turned into a chalice cup -all the same size. A duplicating apparatus aided in turning his chalice cups on his 11 inch Delta lathe. This was the only lathe he had, and he kept it in excellent condition. His chalice cups number over 700, each of a different species. This collection is in Dorothy's custodianship. Ultimately, it will go to the Cradle of Forestry in the Pisgah National Forest for permanent exhibit when the anticipated

Educational-Research Building is completed.

Max had as complete a workshop in his basement as any woodworker could dream of owning. He amassed an extensive collection of jigs and accessories, particularly for use with his lathe and, of course, an extensive assortment of exotic woods. Besides his chalice cups, he made many beautiful turnings of hardwoods from all over the world, and those of us who are privileged to own one of his pieces greatly cherish it.

Some of Max's work will be displayed at the May meeting of NCW in Hendersonville, including some samples of his chalice cups.

#### Editor's Note

In February, I went with Carlton to visit Mrs. Kline and to ask her permission to show some of Max's turnings at our meeting. I was impressed by the obvious devotion this man had for wood and his determination to share by means of his beautiful chalices the unlimited beauty that nature has given us in the form of wood. The photograph on the front page shows only a small part of his entire collection.

#### PRESIDENT'S NOTES

Congratulations to our new members: James M. Hill, 8 Gagama Ct., Brevard, 28712; David L. Ward, 7 Cardinal Drive, Brevard, 28712; Ronald C. Burlison, Rt. 1, Box 5, Bessemer City, 28016. This brings our present membership to 95.

A time to reflect on our accomplishments and then get moving on. I doubt that many chapters of AAW have had the success which we have enjoyed. Now that our new WOODFAST LATHE is ordered, we have our own chairs, PA system, 25 inch TV and VCR. Our lending library is well stocked with books and video tapes, and we are about to reinforce our organization with committee members to look after most of our needs. We are at a new beginning, where we can spread the routine chores out and get on with better programing, so that most members will just "hate to miss" any meeting.

Now that many of our members are obtaining better skills and equipment and tools, we need to move into design and finishing. We each contribute when we bring turnings for "Show and Tell" and by talking about problems that may have arisen when making a certain piece, we usually help to bring solutions to other members who may have agonized over a similar problem. Ray Key provided a valuable tip when he suggested dampening wood fibers with oil or even mineral spirits to soften them for a clean finishing cut. I have found that this works great, especially with kiln-dried hardwoods such as curly maple and dense, highly figured ash and oak.

Our June 13th. program will feature polychromatic assembly and turning by Ted Sellers. -Tony Bradley

#### MAY 9th. MEETING ON THE ROAD

Because our members come from all parts of the state (and from two other states), we try whenever possible to bring the action closer to home by having a regional meeting somewhere other than in Hickory. Last September, we had a very fine all-day meeting at Rodger Jacobs' studio in Newland. This month we will have another such meeting in the Hendersonville area at Leisure Craft, Dick Herman's shop. This too will be an all-day meeting, beginning at 10:00 a. m. and ending at 3:30 p. m.

Herb Quarles will be our demonstrator, using the Hegner lathe. Herb is one of our professional turners. His work can be found in various collections throughout the country. He has studied under David Elsworth, whose techniques have become a part of Herb's approach. Several months ago, we were privileged to watch Herb demonstrate his skill at turning miniatures, especially his beautiful polychromatic Christmas tree ornaments.

Our May meeting will begin with Herb turning a small bowl, showing some of the techniques he learned from David Elsworth. This will include reverse turning. His second demonstration will be a hollow vessel form, showing his method for deep hollowing. Reverse turning will also be a part of this demonstration. Herb will conclude with the turning of a laurel root weed pot. Those of us who have seen Herb's laurel root weed pots and lamps will surely look forward to this demonstration.

There will be a one-hour lunch break from 12:00 to 1:00. We will be able to order our choice of food in the morning, and it will be delivered to us on location -no need to go looking for places to eat.

Our meeting will conclude promptly at 3:30 in order to give ample daylight travel time for those who may have to go long distances to get home. Also, there are several motels in the area for those who want to come early or stay overnight.

Directions Dick's shop is located on Upward Road, a little less than a mile east of Interstate 26. Upward Road is exit number 22 on I-26, which is the first exit south of the US-64 exit.

For those coming by way of I-40 to I-26, the Upward Road exit is about 22 miles after you turn off I-40 onto I-26. Those coming from the Charlotte area may choose to take I-85 and SC-11 to I-26 and then up the mountains to exit 22. Others may come up US-74 to Bat Cave, US-64 to I-26, and then south to exit 22. From Brevard, take 64 east to I-26 then south to exit 22. If you get lost, call 693-8241, and we'll send a SWAT team to get you!

#### MOTELS NEARBY

Comfort Inn, (704) 693-8800, I-26 and US-64 east, Senior and AAA discounts  
Ho-Jo, (704) 692-1446, In town, Justice St. at NC-191  
Hampton Inn, (704) 697-2333, I-26 and US-64 east  
Ramada Inn, (704) 692-0521, I-26 and US-64 east, Senior discounts

#### THE DAPHNE OSOLNIK SCHOLARSHIP FUND

Those of us who know and admire Rude Osolnik regard him as the Master of the Masters at the art and craft of woodturning. We who accept the old saying that "behind every great man there is a great woman" agree that in Rude's case, this is certainly true. Many years ago, Rude and Daphne Osolnik formed a life partnership that flourished and brought to the world some of the finest examples of true craftsmanship ever to be seen. Unfortunately, this partnership was temporarily interrupted several years ago when Daphne moved on to the Creator's higher callings.

In memory of this wonderful lady, the American Association of Woodturners has established a scholarship fund which will assist worthwhile aspiring turners in the pursuit of their craft. At the May meeting we hope to have information about a raffle to raise money for the fund. Winners will receive some very fine prizes, including turnings by Rude Osolnik, Ed Molthrop, and a General lathe. Let's all participate in this very fine cause. -K. B.