



North Carolina **WOODTURNER**

Journal of the North Carolina Woodturners Association
A Chapter of the American Association of Woodturners

Volume 12, Number 12

December 2002



Maple Bowl
by
Ron Mechling

THE PRESIDENT'S MESSAGE

By John Winslett

The November program was a great show of talent and skill. Terry Brown of the Triangle Turners is a professional and he really demonstrated his skills. Most of us are very reluctant to use the skew chisel, but he made it look easy! If you are into spindle turning his techniques should give you a leg up.

Your Board held a discussion on the number of Directors needed to handle the activities of the Association. They noted that with our membership number, having nine Directors plus six Officers seemed excessive. Therefore, they unanimously voted to recommend a change to our By-laws, reducing the number of Directors to six (6). This was announced to the membership as required by the By-laws and will be presented for approval at our December Christmas party/auction. The Officers for the coming year will be elected by the Board of Directors as provided in the By-laws and announced to the membership at our January meeting.

Our December meeting will be at the First Presbyterian Church in downtown Hickory on the 14th. We start at 10 o'clock and have a luncheon followed by the auction. You may bring anything you wish to sell including large tools, but they must be left outside to prevent damage to the Church floor. The parking lot is right outside the Fellowship Hall where we meet. Our thanks goes to Tom Fitz for arranging this very hospitable facility. If you plan to attend and did not sign up at our last meeting, please call either Mary Bachand or me so we may have as accurate a number as possible. If you cannot commit until the last minute come ahead as we have reserved some extra spaces.

Mary is accepting 2003 membership dues for all members who have not paid. Please renew as early as you can so that we have an estimate of the coming year's number.

Not much else to tell this month. Hope to see you at the Party.

John

Library News - by Mary Bachand

Thank you to those who took advantage of my "winter special". I had hoped to have a lot of rentals so that I could buy all of the new videos that I have found. I was able to order "Turning Wood for the Love of It" by Tobias Kaye, and "Vessels of Illusion" by Trent Bosch.

Ric Erkes made a neat discovery when reading our newest book, "Masterful Woodturning" by S. Gary Roberts. Gary gives Tony Bradley and Ken Bachand credit for the inspiration for one of his turnings. So nice to know that the NCW is recognized in Texas.

Coming Events - by Ric Erkes

December 14 - 10:00 AM. Christmas lunch and auction.

2003.

- *Jan. 11* - Scott Ollis. Scott is a member of our club and has done numerous demonstrations highlighting the Powermatic lathe. Scott will show the techniques he uses to turn a square bowl. What is the best way not to be hit by those flying wings? Come find out what Scott means by 'putting a square peg in a round hole'.
- *Feb. 8* - Joel Hunnicutt - segmented turning.
- *Mar. 8* - Joe Nelson - hollow vessel with spiral ridges.
- *Apr. 12* - Tom Crabb - multi-axis vessel with two tall narrow openings.
- *May 10* - Mark St. Leger - smaller items.
- *Jun. 14* - Open.
- *Jul. 12* - Open.
- *Aug. 9* - Chris Ramsey - turning a wearable hat.
- *Sept. 13* - Phil Brennon - southwestern style instructions.
- *Oct. 11* - Open.
- *Nov.* - mini-symposium.
- *Dec. 13* - Christmas party.

Member News - by Mary Bachand

A special "Thank You" to all of you who were prepared to pay your dues at our November meeting. From your comments, I know that you read my notices. I didn't have to try to make change for any \$100 bills, thank goodness! I will have the 2003 membership cards ready for the January meeting.

Just in case any of you find an extra \$35 hidden someplace and want to pay your dues, you can mail them to me at the address listed for the NCW in the Journal. The sooner you do it, the sooner I'll be able to get out the new directory.

Another "Thank You" to those of you who participated in the Klingspor show recently. We were able to get some new members from those who attended the show. So be sure to welcome these new members: Richard Aultman of Granite Falls; Jim Smith of Concord; Reggie Sweat of Hickory; and, Steve Wright of Shelby.

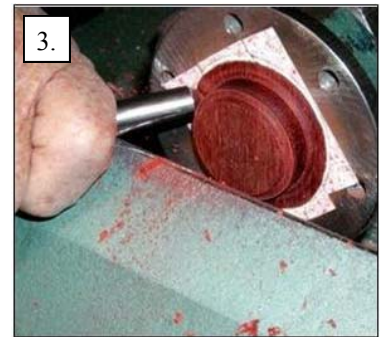
Please remember that our December meeting will be our annual auction and social. I do hope that you will plan to attend and bring that person in your home who wonders what you do on the second Saturday of the month. He or she might be pleasantly surprised at what a nice group you associate with.

NEXT MEETING: DECEMBER 14th at 10:00 am

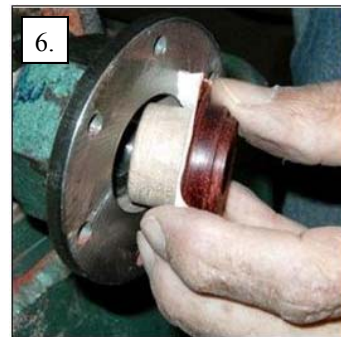
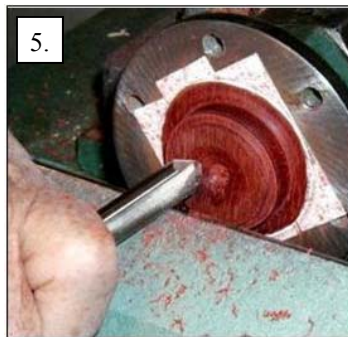
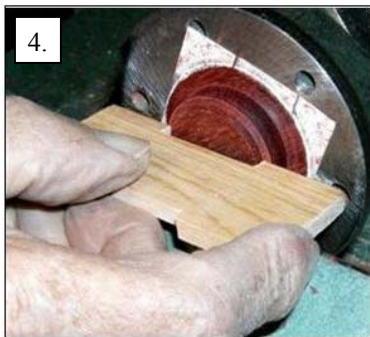
Making A Small Contrasting Hollow Form Rim - Wally Dickerman (printed with permission)

Wally Dickerman has been turning wood for over 65 years. He has taught hundreds of turners and demonstrated at numerous symposiums. Wally lives in Green Valley, AZ.

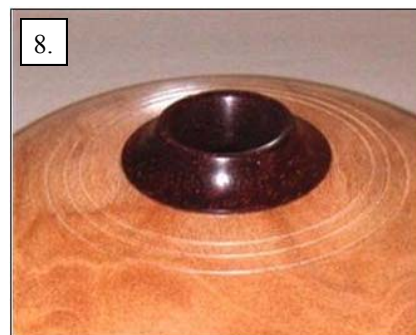
1. After hollowing the bowl, which is 4 inches in diameter, and sanding to 600, true up the rim area for gluing with a sanding stick using 320 sandpaper. Very simple.
2. This is the result - the opening is about 3/4 inch.
3. Use double faced tape to apply the accent wood to the faceplate. Using a side ground square nose and a 1/4 in. spindle gouge, cut a tenon to fit the opening, and true up the side. Use the gouge rolled over on its side, with the flute pointing to 9 o'clock. With a good cut, no sanding is necessary.



4. Checking for a true gluing surface.
5. Shaping the underside of the piece, using a 1/4 in. bowl gouge. A spindle gouge could be used.
6. A method of removing a piece when using double faced tape - a plug is turned to fit inside the faceplate. After inserting it, the faceplate is threaded onto the spindle, the plug easily pushing the piece off.



7. After gluing the rim to the bowl, using just a few drops of CA glue, shape the rim with a 1/4 in. bowl gouge.
8. The finished rim. The diameter is 1 1/8 in. and the opening is about 1/2 in.



Demonstrator Review - by David Propst

Our November demonstrator, Terry Brown, is a professional furniture and architectural turner. He is truly a master of spindle work and gave a most informative and interesting presentation. Spindle work is defined as the work piece being (usually) held between centers with the grain direction running lengthwise along the lathe.



He started by talking about the tools he uses. Terry prefers the Hamlet tools made from ASP2030 and ASP2060 steels available from Packard Woodworks. He gave the example of seventy 3ft columns he recently turned from yellow pine 4x4's. For the

entire job he never had to regrind his 2060 skew, he only had to hone it about every ten columns. While tools made from these metals are more expensive to buy, not having to regrind these tools as often makes them much less expensive than regular HSS tools over the life of the tool.

Terry hones all of his turning tools, including the flutes of his spindle and bowl gouges. He passed around wooden models, demonstrating an edge that had been honed on one side versus one that had been honed on both sides. Honing will greatly improve the cutting edge of your tools as well as extend their life.

During the day, Terry often mentioned watching tapes as a good instructional tool. However, he said after watching a technique 2-3 times on tape, turn the sound off and watch it again. Without the narration it is often easier to see what the demonstrator is really doing.

Highly recommended were two books for info on spindle turning. The first, *The Fundamentals of Woodturning* by Mike Darlow, is an excellent reference book on almost any problem one may encounter while turning spindles and how to solve it. The second text recommended was *Woodturning* by Klaus Pracht. He also recommended tapes by Richard Raffan. Raffan's tapes have good camera angles which show tool presentation from the turner's perspective

Terry believes it is essential to place your turning tools by the lathe in the sequence you are going to use them. In production, work time is money and searching for tools can waste a lot of time.

Centering: As a production turner, Terry had many tips and techniques for speedily and accurately setting up and turning spindles that he shared during the demo. He demonstrated marking techniques for finding the center of a spindle as well as a couple of homemade centering jigs that eliminate the need for marking.

Story Sticks: Story sticks are very valuable for laying out a spindle and for referring to throughout the production process. On the story stick is the shape and measurements of the spindle. Make a story stick in sections if needed for convenience and ease of handling. As valuable as a story stick is, when turning spindles with a new design always turn a sample from waste wood. Often a design will change when you actually see it in wood.

Tool Rest Height: Many book and videos specify an "optimal" tool rest height. Terry explained how this makes little sense, as the best height for the rest will depend on the lathe height, height of the turner, size of spindle, type of tool, etc. To demonstrate this he used a young lady from the audience to show how different an "optimal" tool rest height would be for each of them.

Drive Centers: Terry does not use a traditional four-prong center for turning. He uses a homemade drive center with a sharpened outer rim and a center point. Made from a used #2MT machinist's drill bit, this center allows the wood to slip if there is a catch and allows Terry to change out spindles without stopping the lathe. Terry makes these drive centers on the lathe using woodturning tools with HSS cutting bits. Also shown was a jig for sizing turned wooden or metal Morse tapers for custom drive centers.



Calipers: Terry demonstrated a wide variety of calipers for spindle turning and how they are used. He also encouraged us "take a torch" and modify calipers if they can be shaped to be more effective.

Indexing Jig: Terry demonstrated an indexing jig for marking flutes. This easy-to-make jig rests on the bed of the lathe and could be quite useful for bowl turners as well.

Turning Half Spindles: Often the need arises for a half spindle. It is difficult to cut a spindle in half symmetrically. Additionally the saw kerf prevents the half spindle from being 180 degrees round. Terry demonstrated how he solves this problem by gluing brown kraft paper between two blocks with yellow glue. After clamping and drying the spindle can be turned as normal. When complete, the spindle can be halved by lightly driving a chisel into the glue joint. The result is two identical full half round spindles.



Next Month: Part 2: Tools for Spindle Turning

"My Five Rules of Sanding" was written by Russ Fairfield and originally published in *American Woodturner* magazine, Spring 1999, with Russ's permission to reprint it. (*Italics by Ric Erkes*)

...continued from the November 2002 Journal.

Rule 2 - Refine the shape, remove all tool damage and torn grain, and repair the surface with as coarse an abrasive as necessary to do the job - BEFORE moving through the finer grits...

The only purpose for all subsequent sanding with finer abrasives should be to refine and remove the scratch pattern made by the coarsest paper. If there is torn grain or other tool damage on the surface, go straight to a 60-grit, and don't fool around with anything finer. It makes no sense to brag about never using anything coarser than 180-grit, and then spend two hours to do the same job that could have been done in ten minutes with 60-grit. The finer grit can be used, and for a shorter time, when we have improved our tool handling skills during the turning phase of our work.

(Be aware that the end grain usually will not sand away as fast as the side grain. If you do a lot of aggressive sanding with the lathe turning this can cause you to quickly sand your bowl out of round. This can be especially noticeable on a lidded vessel. There are situations when I would rather sand just a particular area of rough or torn grain than the whole piece. Of course, better tool work is always an option.)

Rule 3 - Sand through all of the progressively finer grits without skipping any of them, and don't quit before 320.

I usually start with 60 or 80, and proceed through 100, 120, 150, 180, 220, 250, 280, 320, and stop at 400, using whatever combination of power and/or hand-sanding that is appropriate to the task. It is much faster to use all of the abrasive grits in the smallest increments possible, than to make large jumps in grit size. This is particularly true at the coarse end of the scale. Of course, we could go directly from 60 to 320 grit if we had a lot of time and sandpaper to waste. (*I find that spending more time getting the torn grain and tool marks out with the lowest grit, makes the rest of the grits go faster since you are then just removing scratch marks.*)

Rule 4 - Remove all of the scratches and the sanding dust from the previous grit before going to the next finer grit.

This step is faster when Rule 3 is also observed. (*Sometimes it is difficult to decide if all the previous sanding marks are removed before moving on to the next higher grit. One way that might help you decide is to do a section at the higher grit, stop the lathe and then compare the areas. Before switching to the next grit, clear any residue away, to remove any large abrasives that might have been left behind. Sanding a round object with the lathe running*

means that half the time you are sanding across the grain. I find that taking a palm sander to the end grain helps take care of those cross grain scratches. Just keep it moving so you can see when the scratches disappear. I find it helpful, starting around the 280 grit, to hand sand WITH the grain before progressing to the next higher grit.)

Rule 5 - Slow is good, and slower is even better.

There is a universal tendency to sand too fast. Heat is the enemy. Keep the sanding medium cool by sanding slowly. And, the slower moving abrasive will remove more material than one that quickly "skates" across the wood surface.

Don't spin the piece in the lathe so fast that the paper gets hot. If it burns your fingers, it is also burning the wood surface, and case-hardening rather than cutting it. We have all experienced the situation where the sandpaper quit cutting, and it took a coarser grade to break through the surface glaze, only to have the same problem when we used the finer sandpaper. When this happens, slow down. I typically sand with a maximum lathe speed of 250 RPM for most work.

It is very easy to generate too much heat when power sanding because we have no direct touch with the abrasive. Heat will clog the disc, and destroy either the cloth backing or the sponge rubber on the arbor. Just because we have an electric drill with a top speed of 2400 RPM doesn't mean that wide-open is the best speed for sanding.

The slower speed will remove more wood faster, the disc is easier to control, there is very little airborne dust, and the sanding discs will last longer. . I use a 3/8" Black and Decker Magnum drill for power sanding wherever it will reach because it has an excellent trigger control and it will run continuously at less than 150 RPM. (*I try not to lay the disc completely flat on the piece, but rather sand with the disc slightly tilted. This will help avoid sanding across the grain. If there is room on the inside of a bowl, an orbital sander works great to take out those detracting swirl scratches and also level out any ridges.*)

There are many woodturners who will argue that running the disc sander at a high speed while the work is spinning slowly in the lathe, rather than both at a high speed, is the best way to go. To them I say, try running both at a lower speed and see if the sanding isn't just as fast and easier to control. Two other benefits will be less airborne dust and the sanding discs will last longer.

2003 Challenge Projects

January 2003 - Game or puzzle (see November 2002 Journal for one idea).

February 2003 - Eccentric or multi-axis turning.

March 2003 - Miniature turnings - max dimension = 2"

April 2003 - Turned nuts - either turn a nut out of wood, or turn a nut into something.

May 2003 - Fly house (refer to Mark St. Leger's AAW video for an example).

June 2003 - Croquet ball and mallet. The regulation size of the ball is 3-1/4 to 3-5/8 inches in diameter, and must weigh less than 1 pound. The mallet head should be 8-1/2 to 9 inches in length, and 2-1/8 to 2-3/8 inches in diameter. The faces may be any shape, but must be identical and parallel. Typical dimensions are 2-1/4 inches in diameter by 8-1/2 inches long. The handle should be 32 to 34 inches in length; the first 2/3 of the handle is a little over 1 inch in diameter (this is where you can put your design), tapering to about 7/8 inch. The tenon into the head is 7/8 inches in diameter by 1-3/4 inches long.

July 2003 - Squared or cubed turnings

August 2003 - Something whimsical.

September 2003 - Mushrooms.

October 2003 - Whistles.

November 2003 - Bring your gallery pieces to the Symposium.

December 2003 - Bring your gallery pieces to the annual Christmas party and auction.

Mentor Program

If you are interested in learning new skills, or improving the skills you have, contact one of the following turners for mentoring:

John Winslett (Tryon, NC) - 828-859-9863.
Dean Amos (Sandy Ridge, NC) - 336-871-2916.
David Propst (Valdese, NC) - 828-437-4722.
Ric Erkes (Davidson, NC) - 704-896-3302.
Scott Ollis (Hickory, NC) - 828-294-4423.
David Kaylor (Davidson, NC) - 704-892-8554.
Edgar Ingram (Statesville, NC) - 704-876-4576.
Glenn Mace (Mocksville, NC) - 336-751-1001.
Dick Nielson (Gastonia, NC) - 704-864-1742.

If you are interesting in being a mentor, please let John Uteck know, so he can include your contact information in the Journal.

Gallery Photographs

Don't forget to take the printed photographs of your gallery pieces for your own albums, with our compliments.

Classifieds

Send in your sale or want ads for the newsletter classifieds.

NCW Logo Clothing

Coming soon. To see samples of clothing, check out www.vectorshirts.com. Turning smocks will also be available, in the same style provided by Craft Supplies.

Mini Symposiums

The *North Carolina Woodturners'* and *Triangle Woodturners'* mini symposium will be held during November 2003, at the Statesville Civic Center. Watch for details in upcoming newsletters.

The *Ohio Valley Woodturners Guild* is presenting a mini-symposium October 17-19, 2003. The Symposium will be located in Southwestern Indiana on the Ohio border, minutes from the Cincinnati airport and four interstate highways. Richard Raffan, Michael Lee, Bonnie Klein, Al Stirt, and Michael Mahoney will be demonstrating, plus other guest turners. The cost for the three days will be \$235, which will include 3 breakfasts, 3 lunches, Friday evening dinner, and the Saturday Banquet

Fact or Fiction

You know you've been turning too much wood when...

- you see a downed tree and you immediately wonder how many bowls it would make.
- you run over a scrap of wood on the highway and you wonder how it would have turned.
- you close your eyes and you see maple shavings curling off a sharp bowl gouge.
- you visit a junkyard and you start wondering how all those parts could fit together into a bowl lathe.
- you take a break in your favorite chair and you start wondering what you should turn next.
- your friends love the smell of fresh coffee, and you love the smell of fresh wood shavings.
- you see a nice shape on the beach, and you wonder what it would look like in wood.

Challenge Projects

December: Annual Christmas party - auction and gallery.

NOVEMBER GALLERY

Photos by George Wunker



Lee Holt



Jim Miles

Mahogany



Edgar Ingram

Maple Burl



Scott Evans



NORTH CAROLINA WOODTURNER Journal of the North Carolina Woodturners Association

Published Monthly by the
NORTH CAROLINA WOODTURNERS ASSOCIATION, INC
873 S. Rugby Rd., Hendersonville, NC 28791

OFFICERS

President: John Winslett, Tryon (828) 859-9863
Vice President: Dwight Hartsell, Charlotte (704) 598-6029
Treasurer: George Wunker, Winston Salem (336) 768-9855
Secretary: Mary Bachand, Hendersonville (828) 890-4451
Program Chairman: Dwight Hartsell, Charlotte (704) 598-6029
Program Co-Chairman: Ric Erkes, Davidson (704) 896-3302

PAST PRESIDENT

Edgar Ingram, Statesville (704) 876-4576

BOARD OF DIRECTORS

Wayne Hutchins, Charlotte	(Term exp. 2002)	(704) 373-0406
Scott Ollis, Hickory	(Term exp. 2002)	(828) 294-4423
Grant McRorie, Rutherfordton	(Term exp. 2002)	(828) 288-9572
David Kaylor, Davidson	(Term exp. 2003)	(704) 892-8554
Gary Johnson, Statesville	(Term exp. 2003)	(704) 873-4280
Ric Erkes, Davidson	(Term exp. 2003)	(704) 896-3302
J.T. Barker, Hudson	(Term exp. 2004)	(828) 728-9406
Ken Phillips, Hudson	(Term exp. 2004)	(828) 728-3927
David Propst, Valdese	(Term exp. 2004)	(828) 437-4722

Journal Editor: John Uteck

11421 Brook Meadow Place, Charlotte, NC 28214
(704) 395-0728 uteck@conninc.com

Internet: www.geocities.com/nc_woodturners

NOVEMBER GALLERY

Photos by George Wunker

Magnolia



Edgar Ingram

Oak Burl



Don Olsen

various



Ambrosia Maple



J. D. Reinhardt

Maple



Sam McDowell

Ambrosia Maple



Ric Erkes

Remember, our meetings are always at 1:00 on the second Saturday of the month at Klingspor's Woodworking Shop in Hickory unless otherwise noted in the Journal.

**NEXT MEETING: December 14th at 10:00 am at
the First Presbyterian Church in downtown Hickory**